



PHILIPS
bodine

Egress Marking

Emergency Strobe

A flash of **brilliance**

There is a thin line between disaster and your safety

A breakthrough in visual notification in fire and life safety technology

System integrated emergency linear strobe with automatic activation

Alerts, Demarks, and Directs

The BDFS36 emergency strobe (door frame strobe) is a highly visible, system-integrated, Egress Marking Visible Notification Appliance™ (EMVNA™). It is a current limited 12 - 24 volts input driven appliance with low-power consumption, and is hard-wired as a primary signaling device. It complies with the Americans with Disabilities Act requirements for visible signaling appliances, flashing at 1 Hz over the strobes operating voltage range in approved fire systems.

Just like traditional visual notification appliances, its local system synchronized flashing signals are remotely initiated, either automatically from detectors in the fire/security system, manually from pull-stations located throughout a facility, or from the system's integrated access control panel. The BDFS36 is easily configured to synchronize to the integrated system with all of the other NAC-supervised visual notification appliances in the connected zone or line of sight.

Upon activation of the fire/security system, the BDFS36 responds in sync with all other attached appliances by flashing/strobing a highly visible light by illuminating the light strand luminaries attached to each BDFS36 appliance. The illuminated light strands outline the frame of the doorway (or other areas where installed) indicating the proper path to safe egress and shall strobe during the entire duration of the activated fire/security system.

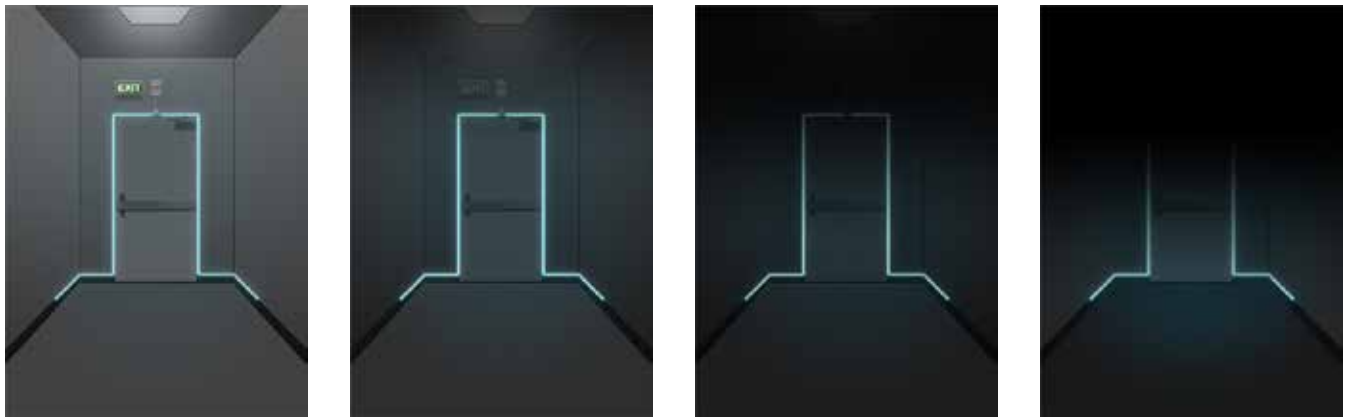
“The illuminated light strands outline the frame of the doorway indicating the proper path to safe egress.”

Features and Benefits

- The BDFS36 technology is “Designated” as a “Qualified Anti-Terrorism Technology” (QATT) by the U.S. Department of Homeland Security’s SAFETY Act Science & Technology Directorate
- Meets or exceeds NFPA® 72 National Fire Code requirements
- Field-installable, integrated life safety emergency visual notification appliance
- Emergency visual notification appliance for occupants AND rescue responders
- Automatic activation by integrated fire, security, or emergency lighting systems
- Compatible with wide range of fire/security control systems
- Remarkably versatile appliance with a myriad of applications to help enhance facility safety
- Highly visible exit point and egress path marker from any angle, outlining the universally recognizable shape of the exit doorway and flanking adjacent areas
- People-focused designed light intensity to prevent flash blinding
- Switch-selection for light pattern and brightness
- 12v/24v current-limited versatility:
 - 24v DC/fire alarm control panel/system integrated (62.5mA draw/Synchronized 1Hz - NAC integration)
 - 12v DC hard-wire compatible with 12v security, emergency lighting and/or access control systems

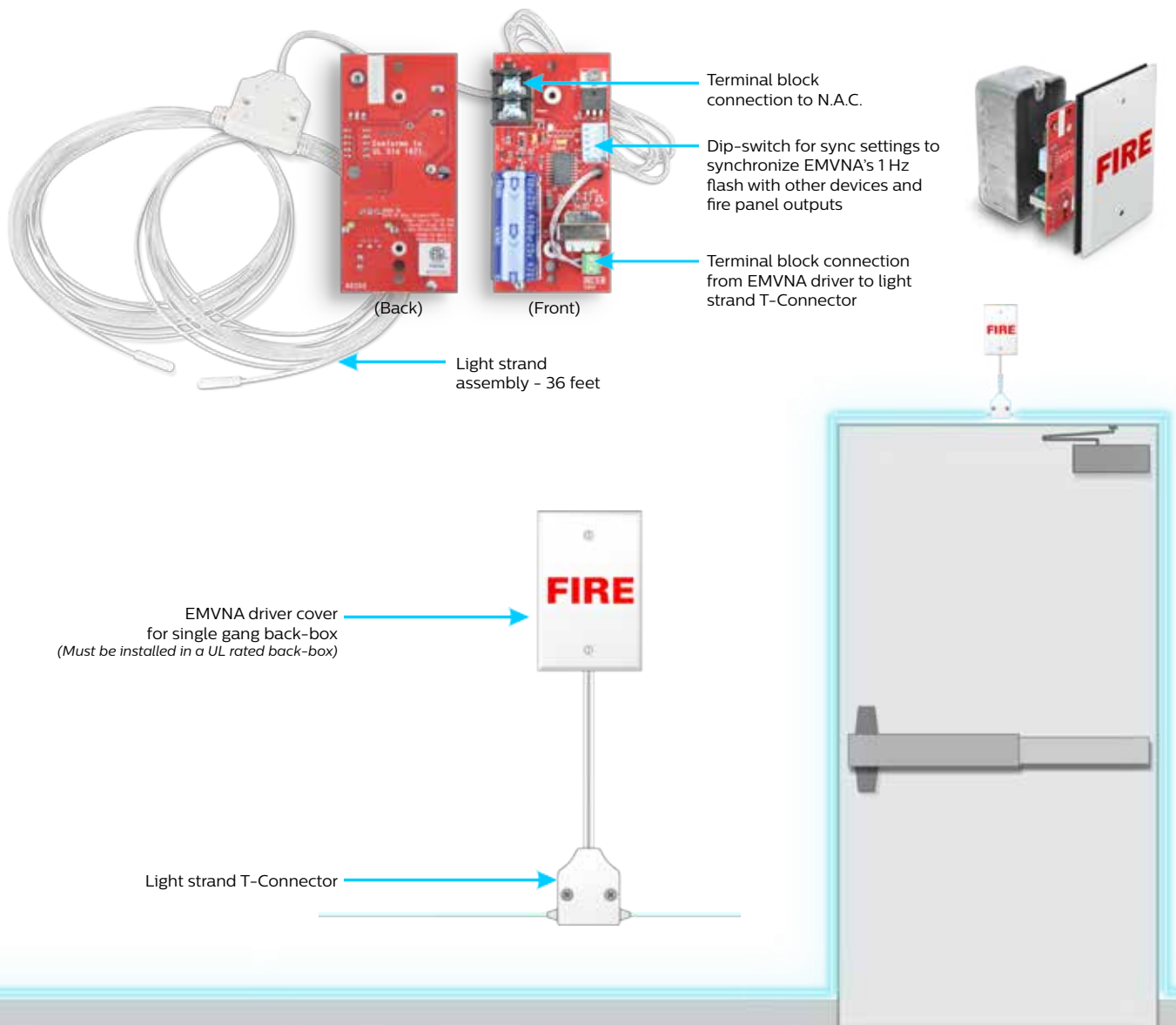


Listed to
UL1971



Alerts, Demarks, and Directs . . .

highly visible from any angle of approach and always below the smoke layer



12v/24v System Integrated/Synchronized/Hard-Wired



© 2016 Philips Lighting Holding B.V. All rights reserved.
Philips reserves the right to make changes in specifications
and/or to discontinue any product at any time without notice
or obligation and will not be liable for any consequences
resulting from the use of this publication.

Philips Emergency Lighting
236 Mt. Pleasant Rd.
Collierville, TN 38017
Sales 800.223.5728
www.philips.com/bodine

Document order number: L0000600 16.02